




Numbers – 2025

 Our annual production is approximately 11 million tons of steel, mostly flat products, and a workforce of around 50,000 employees, our scale is matched by our ambition. Each year, we invest up to USD 2 billion in modernizing our facilities and advancing new technologies.

 50,000
employees

 11
million tons
of steel products
(sales)

 2
billion dollars
investment in production
modernization and new
capacities



Logistics

All transport modes



Railway



Waterway



Automobile transport



ISO quality certificates, licenses



We are a reliable supplier with certified quality management system.

Quality Management System ISO 9001:2015

IATF 16949:2016

Environmental Management System ISO 14001:2015

STO* Gazprom 9001-2018

According to the audit results, the QMS of our company complies with GK "Rosatom" enterprises standards by 100%

Occupational Health and Safety Management System ISO 45001:2018

Anti-Bribery Management Systems ISO 37001:2016

Bureau of Industry and Security (BIS) license

CE (Conformité Européenne) Marking for EN 10025, EN 10219 и EN 1090

The Pressure Equipment Directive (PED) (2014/68/EU)

*STO – Standard of the Organization

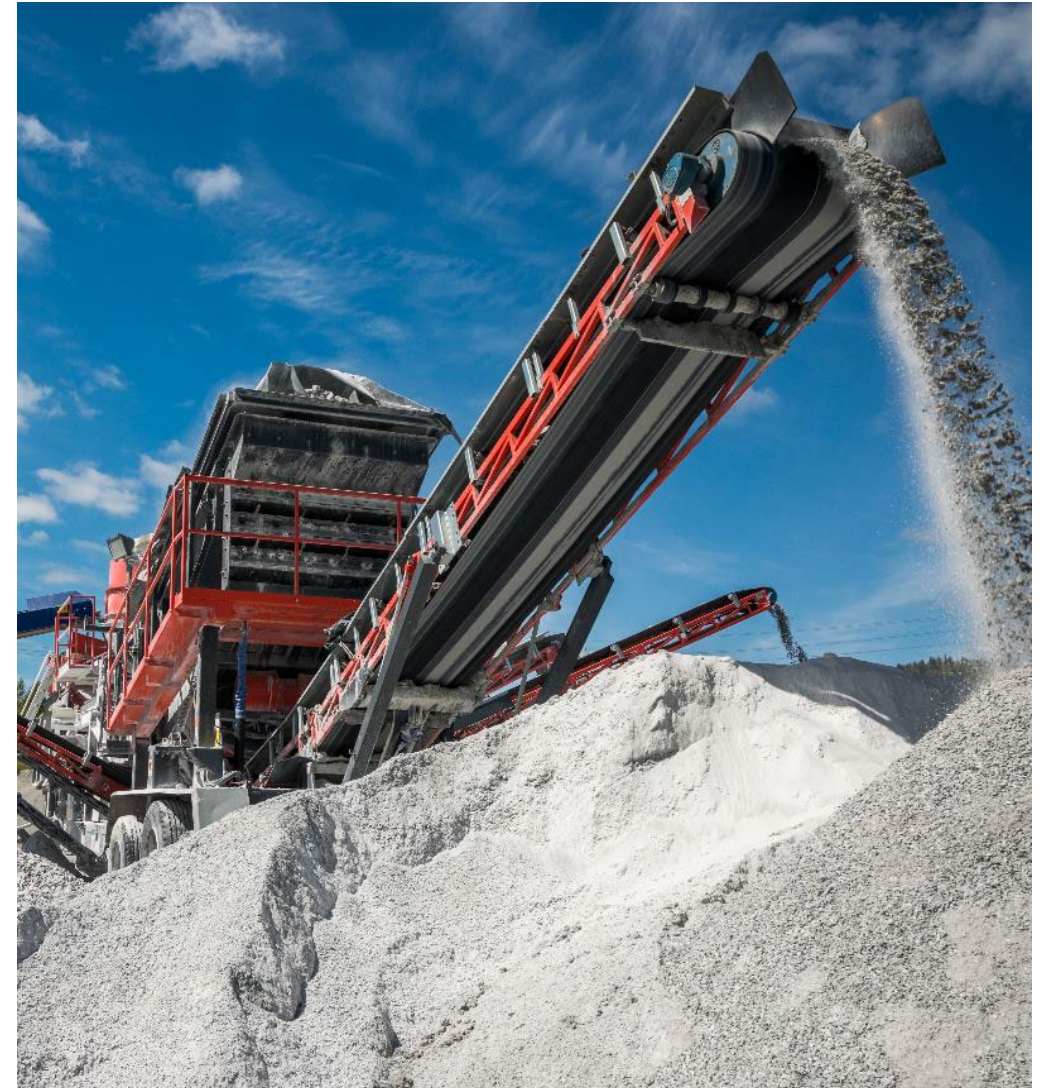
About us



We are one of the largest suppliers that provides a wide range of rolled steel products to the machine-building industry. Covering all sectors of the machine-building industry, the company has an extensive client-base that includes more than 300 partners. We ensure that our clients get the highest quality standards and unparalleled service level.

Machine-building sectors within our expertise:

- Construction machinery
- Equipment for mining and transportation of bulk cargoes
- Agricultural machinery
- Railway machinery
- Shipbuilding
- Automotive industry
- White goods
- Electrical equipment



Hot rolled steel – regular grades

Type	Thickness, mm	Width, mm	Length, mm	Steel grade	Standards
Coil	0.8 – 6.0	940 – 1,450		St3sp/ps; 65G; 50; 45; 40H; 40; 35; 30; 25; 20H; 20ps; 20; 15ps; 15; 10ps; 10; 08ps; 08Yu; 09G2S; 09G2; S255-440; 10-15HSND; 14HGND	GOST 14637-89; GOST 1577-93; GOST 19281-89; GOST 16523-97; GOST 4041-2017; GOST 27772; GOST 6713; GOST 55374; GOST 5520
	1.2 – 25.0	500 – 1,835			
Sheet/ Plate	1.2 – 16.0	900 – 1,835	1,700 – 12,100	S235JR; S235J2; S235JR+AR; S355J2+N; S355K2+N; S355J2G3; S355K2G3; 3SP5; S355J2; S275JR; 15HSND; 3SP3; 09G2S; S235J0; 20K; 22K 09G2D; 3SP1; S355-460MLO(NLO)	EN 10025-02:2004; EN 10225; ASTM A560; JIS G3113-06; JIS G3131-10; JIS G3132-11; JIS G3101-2015; ASTM A36/A36M-19; ASTM A568/A568M-19 ^a ; ASTM A36/A36M-19; ASTM A283/283M-18; ASTM A131/A131M-14; ASTM A1018/A1018M-16 ^a
	6.0 – 50.0	1,400 – 2,530	4,000 – 12,200		
	10.0 – 240.0	1,500 – 4,700	4,000 – 18,000		
Strip	1.2 – 8.0	100 – 499		SAPH 370; SPHC; SPHT 1; SPHT 2; SS400	
				A36; SAE 1005; SAE 1006; SAE 1008; SAE 1010; SAE 1012; SAE 1018; SAE 1015; SAE 1018; SAE 1020; SAE 1021; SAE 1017; SAE 1025; SAE 1026 C; A; CS Type B; HSLAS 50(340) Class 1; SS 36(250) Type 1	
				L245ME – L555ME; L245NE – L415NE; L245 – L485; X42-X70; X42M-X80M	API Spec 5L, ISO 3183, INTI S.30.4

Hot rolled pickled steel – regular grades

Type	Thickness, mm	Width, mm	Length, mm	Steel grade	Standards
Coil	1.3 – 6.0	900 – 1,600		St3sp/ps; St2sp/ps; St1sp/ps; 10ps; 15ps; 20ps; 10; 15; 20; 35; 25; 40; 45; 15; 10; 08ps; 08Yu; 08YuA; 09G2S; 20YuA;	GOST 16523-97 GOST 4041-2017 GOST 17066-94 amendm. IUS11-1997 GOST 19281-2014 amendm.1
Sheet	1.3 – 6.0	900 – 1,600	1,000 – 6,000	S235JR; S235J0; S235J2; S235JRC; S275JR; S275J0; S275J2; S355J2; S355J0; S355JR; S355MC; S315MC; S500MC; A36; CS Type B; DD 11; DD 12; DD 13; DD 14; RSt 37-2; SAE 1006; SAE 1008; SAE 1010; SAE 1015; SAE 1018; SAE 1020; SAE 1025; SG 255; SG 295; SS 33(230)	EN 10025-02:2004; EN10111:2009; EN 10149:2014; ASTM A36/A36M-19; ASTM A1011/A1011M-18 ^a ; EN 10111-08; DIN 17100-80; ASTM A569/A569M-98 JIS G3116-13; JIS G3113
Strip	1.3 – 6.0	100 – 750		SAPH370, SAPH440	

Steel for laser cutting is available for all grades.

High-strength wear-resistant steel – special grades

Intended for the production of equipment, parts and assemblies to be operated under excessive wear conditions. Ensures flawless resistance.

☆	Advantages
1	High strength characteristics
2	High wear resistance
3	Weldability

☆	Applications
1	Mining industry
2	Construction machinery
3	Lifting equipment and attachments
4	Agricultural and processing industry



Steel grade	Thickness, mm		Width, mm		Sheet length, mm	Hardness, HB	Yield strength, MPa	Tensile strength, MPa	Elongation min, %	Impact toughness KCV -40, J/cm ² , min	Standards
	min	max	min	max							
HB 400 (NM 400 counterpart)	20	40	1,500	2,500	4,000 – 12,000	370 – 430	950	1,150	8	35	STO 00186217-582-2021
HB 450	8	40	1,500	2,500		420 – 480	1,050	1,350	8	30	
HB 500	10	20	1,500	2,500		465 – 545	1,200	1,400	8	30	

Other dimensions are available upon request.

High-strength weldable steel – special grades

This is a steel product of high strength, good welding capability and ductility. Strength is increased while maintaining low weight and safety.

☆

Advantages

- 1 High strength characteristics
- 2 Thermal shock resistance from -70 °C to +300 °C
- 3 High weldability

☆

Applications

- 1 Construction machinery
- 2 Lifting equipment
- 3 Transport engineering



Steel grade	Thickness, mm		Width, mm		Sheet length, mm	Yield strength, MPa	Tensile strength, MPa	Elongation min, %	Impact toughness KCV t -40°C, J/cm ² for thicknesses, mm		Impact toughness KCV t -60°C, J/cm ²	Impact toughness KCV t -70°C, J/cm ²	CEV, %	Standards
	min	max	min	max					<40	≥40				
S420QL	10	50	1,500	2,500	4,000 – 12,000	Min 420	Min 520	19	34	34	34	-	no more than 0.46	STO* 00186217-572-2022 SP 16 EN 10025-6
S460QL	10	50	1,500	2,500	4,000 – 12,000	460 – 590	570 – 690	20	70	70	70	-	no more than 0.47	STO 00186217-530-2024 SP 35 EN 10025-6
S690QL	8	50	1,500	2,500	4,000 – 12,000	Min 690	770 – 940	14	80*	38	50**	29**	no more than 0.51	STO 00186217-294-2021 EN 10025-6

* According to STO 294, a KCV(-40) of at least 80 J/cm² is guaranteed up to and including a thickness of 40 mm.

** Guaranteed impact toughness KCV (-50, -60, -70) up to 40 mm inclusive, not less than 50 J/cm², for thicknesses over 40 mm, not less than 29 J/cm²

Quench hardening boron steel – special grades

Hot-rolled 30MnB5 grade is used in farming equipment for the production and repairs of machinery components extending the service life of the product.

Advantages

- 1 Strength required for manufacturing complex products, units and parts
- 2 Extends the service life of the product
- 3 Stable hardening results

Applications

- 1 **Agricultural machinery**



Steel grade	Thickness, mm		Width, mm		Sheet length, mm	Typical yield strength (not guaranteed), MPa		Typical tensile strength (not guaranteed), MPa		Typical Hardness, (not guaranteed), HRC*	Standards
	min	max	min	max		Delivery condition, min	Quenched*, max	Delivery condition, min	Quenched*, max		
30MnB5	2	16	900	1,500	2,000 – 12,000	400	1,200	650	1,700	≤52	STO 00186217-608-2021 ISO № 683-2
	10	40	1500	2,500	4,000 – 12,000						

* - water quenching

High-strength cold-formed steel – special grades

Cold-formed structural steel (meets requirements of S420MC–S700MC according to EN 10149-2) with high strength, ductility and weldability. Reduces weight while increasing strength.

☆

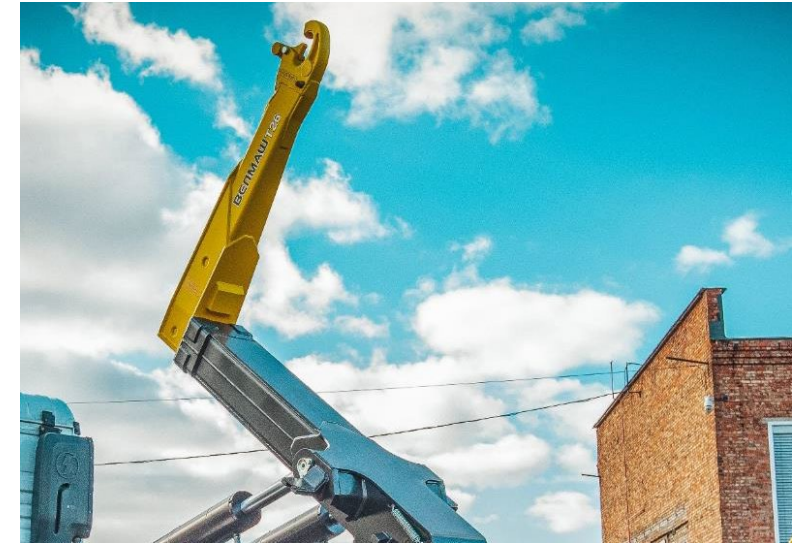
Advantages

- 1
High weldability
- 2
Cold-forming ability

☆

Applications

- 1
Agricultural machinery
- 2
Lifting and rigging equipment
- 3
Automotive industry



Steel grade	Thickness, mm		Width, mm		Sheet length, mm	Yield strength, MPa, min	Tensile strength, MPa	Elongation, %, min	Impact toughness KCV -40, J/cm ² , min	Standards
	min	max	min	max						
S420MC	3	16	900	1,500	2,000 – 12,000	420	480 – 620	19	37.5	STO 00186217-308-2021 EN 10149-2
S460MC	4	12				460	520 – 670	17	37.5	
S500MC	4	12				500	550 – 700	14	50	
S550MC	4	10				550	600 – 760	14	50	
S700MC	4	10		1,250/ 1,500*		700	750 – 930	12	37.5	

*For thickness 6-10 mm

High strength tubes – special grades

Tubes S420MC, Tubes S500MC

☆ Advantages	☆ Applications
1 High strength characteristics	1 Agricultural machinery
2 High weldability	2 Lifting and rigging equipment
3 Cold-forming ability	3 Frame structures elements of trailer equipment



Марка	Yield strength at Rp0,2 (MPa),	Tensile strength, Rm (MPa)	Elongation, A (%)	Impact strength KV -20°C (J) min	KCV -40°C (J/cm²)	KCV -60°C (J/cm²)	Profile dimensions, mm	Edge thickness, mm	Length, mm	Standards
	min		min	min						
Tubes S420MC	420	540-720	20	40	40*	34*	100x100 ÷ 300x300	4-12**	6,000 – 16,000	STO 00186217-581-2021
Tubes S500MC	500-630	550-700	14	-	40*	38*	Φ48	2.0 – 3.0	5,000 – 16,000	STO 00186217-704

Other dimensions are available upon request

* optional requirement for the purpose of statistical accounting

** for profile dimensions please refer to STO

Clad steel for shipbuilding – special grades



Roll bonded clad steel

Layers adhesion strength from 150 N/mm²

Standard	Base layer	Clad layer
ASME SA 263, 264	PCE500W PCF500W SA387Gr11 SA387Gr12 SA516gr70* SA387Gr22*	410S 304L 316Ti Tr321 316L*
	Other grades upon customer request	Other grades upon customer request



Method ESF followed by rolling

Layers adhesion strength from 350 N/mm²

Standard	Base layer	Clad layer
ASME SA 263, 264	SA387Gr11 SA387Gr22*	410S Tr321*
	Other grades upon customer request	Other grades upon customer request



Produced mix

Thickness Roll bonded clad steel	12–110 mm** Thickness of clad layer is less than 10% of total bimetal thickness
Method ESF followed by rolling	8–40 mm ** thickness of build-up clad layer makes up 10-25%** of total plate thickness
Width	1000-3500 mm
Length	2000-12000 mm

Petrochemical machinery – special grades



Corrosion-resistant

Standard	Steel
GOST 10885 ASME SA 263, 264, 516	05HG2BA* SA516 grade 70 hic Other grades upon customer request

Thickness	12–105 mm**
Width	1500-4600 mm
Length	2500-14000 mm

Absorber



* Production terms and timeframes to be agreed individually.
** We are ready to consider sizes upon customer request.

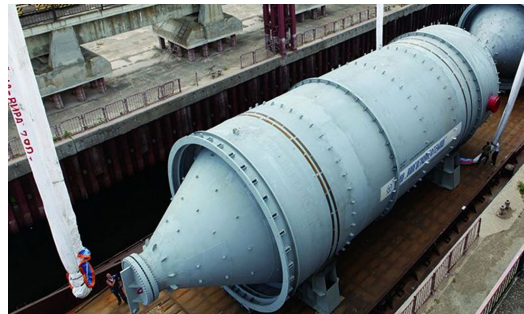


Heat-resistant

Standard	Steel
GOST 10885 ASME SA 387, 263, 264 EN 10028-2 EN 10028-3	12HM SA387Gr12* SA387Gr22* P460NL P420NL 16Mo3 15NiCuMoNb5-6-4 Other grades upon customer request

Thickness	12–160 mm**
Width	1500-4600 mm
Length	2500-14000 mm

Coke Drum



High-strength steel

Standard	Steel
GOST 10885 GOST 5520 GOST 19281 EN 10028-2 EN 10028-3 ASME SA 516, 537	09G2S SA516 Gr70* SA537 Cl2* P460NL P420NL P355NH 16Mo3 Other grades upon customer request

Thickness	12–160 mm**
Width	1500-4600 mm
Length	2500-14000 mm

Heat exchanger



Cold rolled steel – regular grades

Type	Thickness, mm	Width, mm	Length, mm
Coil	0.25 – 3.2	600 – 1,600	
Sheet	0.25 – 3.2	800 – 1,600	1,000 – 4,000
Strip	0.25 – 3.2	100 – 599	

Steel grade	Standards
08ps; St1sp/ps; St2ps/sp; St3ps.sp; 10ps; 15ps; 20ps; 10; 15; 20; 30; 35; 40; 11YuA;	GOST 16523-97
09G2S	GOST 17066-94
08Yu; 08ps	GOST 9045-93
08Yu; 08ps; 15ps; 15; 10ps; 10; 08; 20p; St1sp/ps; St2sp/ps; 20;	GOST 19851-74
DC01, DC03, DC04, DC05	EN 10130:2006
CS type A, CS type B, DS type B, EDDS	ASTM A1008/A1008M
SAE 1006, SAE 1008, SAE 1010	ASTM A568/568M
SPCC, SPCC-T	JIS G3141
DC01EK, DC04EK	EN 10209
EK2	DIN 1623
HC260LA, HC300LA, HC340LA, HC380LA, HC420LA	EN 10268

*Thickness and width range may vary depending on steel grade.
Annealed and non-annealed CRC (cold rolled coils) production is available.

End use

Construction

- Stairs, railings, racks, doors

End use

Machinery

- Automotive industry
- Whitegoods
- Industrial packaging

End use

For further galvanizing and enameling

Cold rolled steel for industrial packaging – special grades



Advantages

- Developed steel production technology, taken into account requirements of steel drums manufacturers
- The possibility of producing steel with a minus tolerance for metal thickness
- The minimum steel width tolerance is up to 1 mm
- Surface cleanliness: light flux reflection rate - not less than 80%
- The technical possibility of using DOS-A oil.

Steel grade	Standard	Thickness*, mm	Width*, mm	Length*, mm
DC01, DC03, DC04	EN 10130	0.25 – 2.00	90 – 1,600	1,000 – 4,000
FS Type B, FS Type A, CS Type C, CS Type B, CS Type A	ASTM A653 / A653M-07	0.25 – 2.00	90 – 1,600	1,000 – 4,000
SPCC	JIS 3141	0.25 – 2.00	90 – 1,600	1,000 – 4,000

* The full range of dimensions is given. Specific dimensions to be agreed when placing an order.



Cold rolled steel for thermal equipment – special grades



Key benefits

- Increased resistance to corrosion pits
- Durability and failure-free operation: 1.5 times higher resistance of finished products to ulcer corrosion compared to ordinary steel grades, absence of corrosive non-metallic inclusions
- Cost-effective: increased corrosion resistance without significant change in cost
- Operational flexibility: the possibility of replacing ordinary grades with this rolled steel, with no significant changes in equipment operation modes required
- Corrosion resistance: density of corrosive non-metallic inclusions of the first and second types - not more than 2 inclusions per 1 mm²



Application

- Heating devices in the housing and utilities sector



Specifications

Steel grades	Thickness, mm	Width, mm	Length, mm (for flat products)
DC01 (counterpart) for tubes	0.4 – 3.0	900 – 1,400	1,000 – 4,000
DC04 (counterpart) for stamping			

* Other sizes are available upon request

Enamelling steels: DC05EK, DC04ED – special grades



Assignment of DC05EK

- Parts made by particularly complex drawing, under two-layer enamelling
- It is used for the manufacture of sanitary products (shower trays and sinks), household appliances (ovens, electric stoves and household stoves), dishes with complex drawing with the possibility of eliminating the annealing process of steel from the processor (customer).



Assignment of DC04ED

- Parts manufactured by particularly complex drawing
- Manufacture of household appliances (gas and electric stoves), sanitary products (baths), enamelled dishes of complex shape with the possibility of excluding the process of annealing steel from the processor (customer)

Steel grade	DC05EK	DC04ED
Standard	EN10209	EN10209
Tensile strength, N/mm ²	270-350	270-350
Yield strength, H/mm ² , max	210*	210
Elongation, %, min	35-37*	34-38*
Hydrogenation coefficient, %, min	40	40

* The value depends on the thickness of the rolled product



Electrical isotropic rolled products

Non-grain-oriented steel – special grades

Application

- Electrical equipment, components for electric motors and generators

Benefits

- High quality
- Customization of consumer properties to the requirements of processors



Grade	Standard	Thickness*, mm	Width**, mm
2012; 2112; 2211; 2212	21427.2-83	0.50	70 - 1008
2214	21427.2-83	0.50	80 – 1008
2216	21427.2-83	0.50	90 - 1000
2312; 2411; 2412	21427.2-83	0.50	40 - 1008
2215П	TU 14-1-3496-91	0.50	80 - 1008
2411	21427.2-83	0.35 - 0.50	40 - 1008
M300-35A; M330-35A	EN 10106:2015	0.35	90 - 1040
M310-50A; M330-50A; M350-50A; M400-50A;	EN 10106:2015	0.50	90 - 1040
M600-50A; M700-50A	EN 10106:2015	0.50	80 - 1040
M800-50A	EN 10106:2015	0.50	80 - 1000
M940-50A	EN 10106:2015	0.50	80 - 1080
M530-65A; M600-65A	EN 10106:2015	0.65	80 - 1010
M700-65A; M800-65A	EN 10106:2015	0.65	80 - 1000
M1000-65A	EN 10106:2015	0.65	80 - 1008

Semi-organic coating TSh1 improving stamping ability "TSH1"

Inner diameter of the coil: 600 mm +/-20 mm (508 mm on request).

Supply: in horizontal position on special sheltered cars (vertical position on request).

Weld: 0.65 mm thick (marked with red scotch tape).

* Full size range is indicated Specific dimensions to be agreed at order

** Mill edge

Galvanized steel – regular and special grades



Key benefits

- Corrosion resistance
- High strength for appropriate grades
- High ductility for appropriate grades
- Wide size range



Application

- Automotive industry
- White goods
- Electrical equipment



Type	Thickness, mm	Width, mm	Coating class	Regular steel grades	Special steel grades	Standards
Coil	0,35 – 3,50	722 – 1 650	100	01; 02; 220; 250; 280; 320 08ps; 08Yu, St3sp/ps; St1ps; St2ps	03; 04; 05; 06; 07; 350; 390; 420; 450, 550	GOST 14918 - 20
			120			
			140			
			180			
Sheet	0,35 – 3,50	722 – 1 650	200	S220GD; S250GD; S280GD; S320GD; DX51D; DX52D	S350GD; S390GD; S420GD; S450GD; S550GD, DX53D; DX54D; DX56D; DX57D; HCT590X; HCT780X; HCT980X, HX180BD; HX220BD; HX220YD; HX260LAD; HX260YD; HX340LAD; HX420LAD	EN 10346
			225			
			275			
			350			
			450			
Strip	0,35 – 3,50	100 – 599	600	FS Type A; FS Type B; CS Type A; CS Type B	CS Type C; SS 33(230); SS 37(255); SS 40(275); SS 50(340) Class 1; SS 50(340) Class 2	ASTM A653/A653M

Thank you for your attention!
